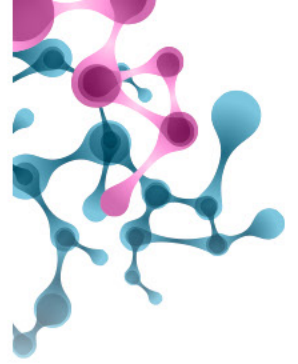


8th IMIBIC YOUNG INVESTIGATORS MEETING

IMIBIC Building • Conference Room • Córdoba, 30-31 May, 2017



Programme

Day 1 (30th MAY)

08:30 - 09:00	Registration and Poster display
09:00 - 09:30	Opening ceremony
09:30 - 11:00	SESSION I. Nutrition, Endocrine and metabolic diseases
Ia 09:30 - 9:45	Atrial fibrillation, genetic and biomarkers in the Atherosclerosis Risk in Communities Study. Antonio Pablo Arenas de Larriva
Ib 09:45 - 10:00	Adipokines and their receptors are widely expressed in mouse prostate and are distinctly regulated therein by the metabolic environment. André Sarmento Cabral
Ic 10:00 - 10:15	Perturbed central ceramide signaling as novel mechanism for obesity-induced precocious puberty: Evidence from preclinical studies. Violeta Heras Domínguez
Id 10:15 - 10:30	Unbalanced proteostasis in preadipocytes in obesity-related metabolic disease. Julia Sánchez Ceinos
Ie 10:30 - 10:45	Chronic consumption of a Mediterranean diet improves endothelial dysfunction in patients with diabetes mellitus. José David Torres Peña
If 10:45 - 11:00	Involvement of a novel AMPK-Kisspeptin pathway in the metabolic control of puberty. Alexia Barroso Romero
11:00 - 11:30	Coffee Break
11:30 - 12:15	Poster Showcase. SESSION I Nutrition, Endocrine and metabolic diseases & SESSION I Active ageing and fragility. Infectious and Immunological diseases. Organ transplantation
12:15 - 13:45	SESSION II. Active ageing and fragility. Infectious and Immunological diseases. Organ transplantation.
Ila 12:15 - 12:30	A prospective study to evaluate the impact of early everolimus on the recurrence of hepatocellular carcinoma after liver transplantation. Beatriz Gros Alcalde
Ilb 12:30 - 12:45	Quality of Life of Informal Caregivers of People with Alzheimer's Disease. Conductual Intervention. Patricia Luque Carrillo
Ilc 12:45 - 13:00	External validation of a risk score for carbapenm-resistant Klebsiella pneumoniae bloodstream infection in a prospective cohort of rectal carriers. Ángela Cano Yuste
Ild 13:00 - 13:15	Vitamin E from food sources can prevent cellular aging: CORDIOPREV study. Andreea Corina Baba
Ile 13:15 - 13:30	Effect of hypoxic preconditioning on rat Adipose Derived Mesenchymal Stem Cells (ASCs) functionality. Study in a diabetic rat model. Ana María López Díaz
Ilf 13:30 - 13:45	Diagnosis of acute hepatitis E genotype 3 infection by viral isolation from saliva. Pedro López López
13:45 - 14:15	In Memory of Enrique Aguilar Benítez de Lugo
14:15 - 15:45	Lunch
15:45 - 17:15	SESSION III. Chronic and Inflammatory diseases
Illa 15:45 - 16:00	Assessment of short-term effectiveness of five local treatment modalities in patients with symptomatic knee osteoarthritis. M^a Lourdes Ladehesa Pineda
IIlb 16:00 - 16:15	Regulation of Renal Klotho and FGFR1 Expression. Ma Victoria Pendón Ruiz de Mier
IIlc 16:15 - 16:30	Diagnostic potential of NETosis-derived products for disease activity, atherosclerosis and therapeutic effectiveness in Rheumatoid Arthritis patients. Patricia Ruiz Limón
IIId 16:30 - 16:45	Lithium recovers altered mechanosensory and locomotory behaviors in neuroligin- and neurexin-deficient mutants of Caenorhabditis elegans. Ángel Rodríguez Ramos
IIle 16:45 - 17:00	Defective glucose and lipid metabolism in rheumatoid arthritis is determined by chronic inflammation in metabolic tissues. Iván Arias de la Rosa
IIIf 17:00 - 17:15	Consumption of alcoholic beverages in nursing students at the University of Cordoba. Pedro Manuel Rodríguez Muñoz

17:15 - 17:45 Posters

17:45 - 19:15	SESSION IV. Cancer (Oncology and Oncohematology)
Iva 17:45- 18:00	Components of the splicing machinery are drastically dysregulated in neuroendocrine tumors and associated with malignancy and aggressiveness. Sergio Pedraza Arévalo
Ivb 18:00 - 18:15	Development of a CRISPR-based system to reactivate epigenetically silenced genes. Iván Devesa Guerra
Ivc 18:15 - 18:30	Use of MALDI imaging technology to predict the response to antiangiogenic therapy in colorectal cancer. Francisco Manuel Conde Pérez
Ivd 18:30 - 18:45	Diagnostic accuracy of MRI-Transrectal Ultrasound Fusion prostate Biopsy in men with previous prostate biopsies: The FUPROS16 project. Enrique Gómez Gómez
Ive 18:45 - 19:00	Metabolomics analysis of human sweat by gas chromatography-time of flight/mass spectrometry. María del Mar Delgado Povedano
Ivf 19:00 - 19:15	Alteration of nitric oxide production targets cancer stem cells in breast cancer and augments the efficacy of anti-hormonal therapy. Laura M. López Sánchez

Day 2 (31th MAY)

08:30 - 09:00	Registration and Poster display
09:00 - 10:30	SESSION V. Nutrition, Endocrine and metabolic diseases
Va 09:00 - 09:15	Identification of candidate serum biomarkers of pediatric Growth Hormone deficiency using SWATH-MS next-generation proteomics and feature selection algorithms. Ignacio Ortea García
Vb 09:15 - 09:30	Gender interacts with metabolic abnormalities to influence carotid atherosclerosis in elderly patients. M^a Magdalena Pérez Cardelo
Vc 09:30 - 09:45	Mechanisms and consequences of obesity-induced hypogonadism: Role of a novel hypothalamic miR-137/Kisspeptin pathway. María Soledad Avendaño Herrador
Vd 09:45 - 10:00	Evaluation of the metabolic and inflammatory status in prepuberal children with a history of Extra-uterine Growth Restriction or Prematurity. M^a Dolores Ordoñez Díaz
Ve 10:00 - 10:15	Significance of circulating miRNAs as predictive biomarkers in pre-diabetes and new diagnosed type 2 diabetes mellitus. Rosa Jiménez Lucena
Vf 10:15 - 10:30	Plasma profile of cytokines and adhesion molecules in children with autism spectrum disorder. Cristina Pérez García
10:30 - 11:00	Coffee Break
11:00 - 11:45	Poster Showcase. SESSION II Chronic and Inflammatory diseases & SESSION II Cancer (Oncology and Oncohematology)
11:45 - 13:00	SESSION VI. Cancer (Oncology and Oncohematology)
Vla 11:45 - 12:00	The Splicing Machinery is Profoundly Deregulated in Prostate Cancer: Pathological and Clinical Implications. Juan Manuel Jiménez Vacas
Vlb 12:00 - 12:15	Targeted DNA demethylation in human cells by fusion of a plant 5-methylcytosine DNA glycosylase to a sequence-specific DNA binding domain. Jara Teresa Parrilla Doblas
Vlc 12:15 - 12:30	Regulation of Notch1 expression and activity by DYRK2: New Insights of Carcinogenesis Signaling Pathways. Rosario Morrugares Carmona
Vld 12:30 - 12:45	Neutrophil-to-Lymphocyte Ratio as prognostic factor in SBRT for Lung Cancer. Fabiola Romero Ruperto
Vle 12:45 - 13:00	Plasmatic Levels of miRNAs as Reliable Diagnostic Tool for Prostate Cancer Patients. Vicente Herrero Aguayo
13:00 - 14:00	Plenary Lecture. Dr. Roger Gomis, IRB Barcelona
14:00 - 14:30	Awards and Closing ceremony

